

Postdoc Welcome

Presentations

Vice-Chancellor's Welcome: **Deborah Prentice**

Postdoc Academy: **Steve Joy**

Postdocs of Cambridge Society: **Nino Läubli**

Postdocs Careers Service: **Diane Caldwell**

Action Research on Research Culture: **Kate Dawson**

What is special about Cambridge?

Self-governing – at times bureaucratic, but highly democratic

150+ Faculties and Departments within 6 Schools

- Biological Sciences
- Clinical Medicine
- Humanities and Social Sciences
- Arts and Humanities
- Technology
- Physical Sciences

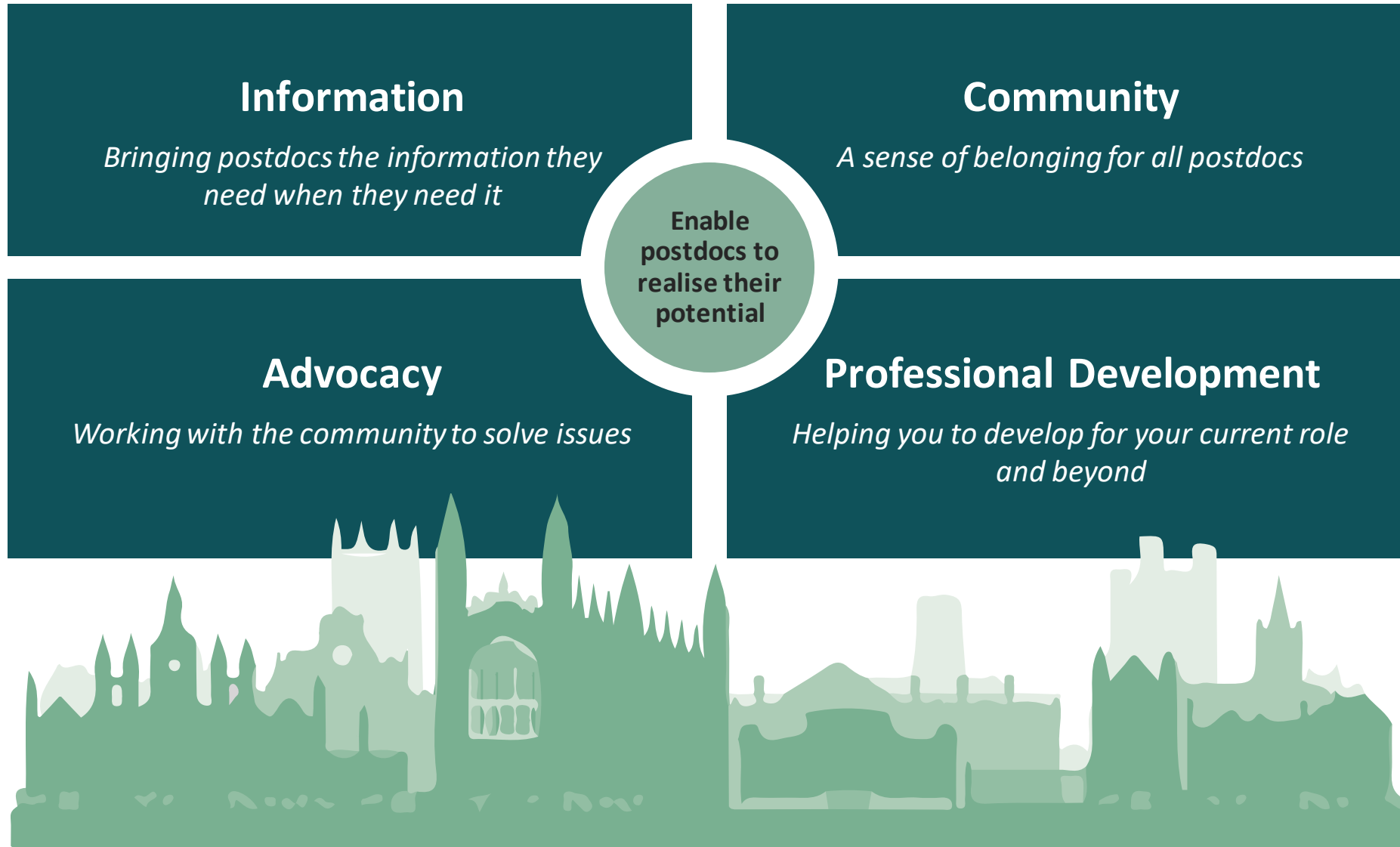
31 self-governing Colleges

Non-school Institutions - Libraries, Museums, Botanic Garden

University Partner Institutes – Sanger, EBI, Babraham

4,000+ Research staff

University of Cambridge Postdoc Academy



Information

Bringing postdocs the information they need when they need it



Weekly newsletter



Postdoc Calendar



@Postdoc_Academy



Information events

Events for postdocs

Professional opportunities

Social community activities

Support and initiatives

www.postdocacademy.cam.ac.uk

contact.pda@admin.cam.ac.uk

Community

A sense of belonging for all postdocs



Offering hot-desking and event spaces at the Postdoc Centres

Providing various topical events and activities focusing on themes that relate to the community

Working with postdoc societies and groups supporting social activities and community endeavours





The Postdoctoral Society of Cambridge

for postdocs – by postdocs



PdOC's aim is to

- represent postdocs
- support and create a social and intellectual network
- facilitate communication and provide information

Recognised as a Senior University
Society and as a Research Staff
Association (RSA).



www.pdoc.cam.ac.uk



contact@pdoc.cam.ac.uk



Aspects of PdOC



Providing advice and information

- New Starters Guide, NVS
- College Affiliations, Travel Grants, Wellbeing, and more
- University Policies

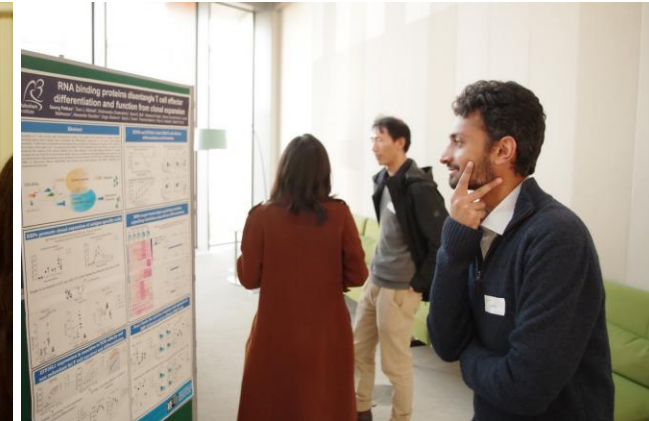
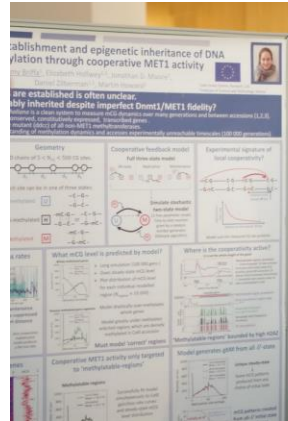
Representing the University's very diverse postdoctoral community

- On university, national, & European level
- Diversity and Equality
- PdOC Department Network

PdOC RD Events

Professional development

- Seminars and talks by ECRs
 - Annual Research Showcase
 - Research Cafés with WestHub
- Climate Change – Wed, 24th April*



PdOC Social Events & Activities



Social events

- Restaurant, pub nights, day trips
- Climbing and sports events
- Board games night @Eddington
- **Cambridge Herbarium Tour:**
Tuesday, 6th February 2024



Get in touch, get involved!

What's next?

- Sign up for our newsletter!
- Visit our website for the new starter & college affiliation guides!
- Join an upcoming event!

Sign Up!



Webpage: www.pdoc.cam.ac.uk

 [Postdocs of Cambridge](https://www.facebook.com/Postdocs of Cambridge)

 [@CamPostdocs](https://twitter.com/@CamPostdocs)

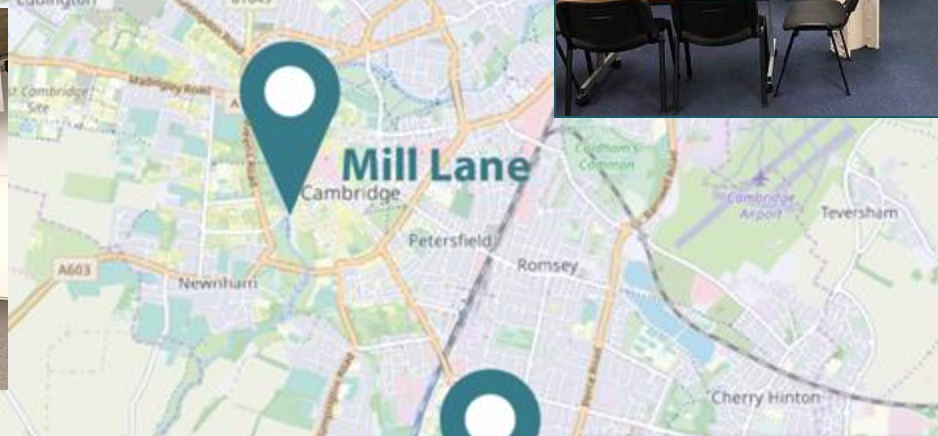
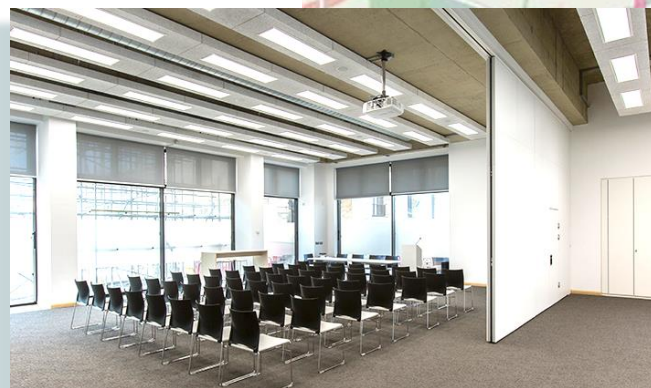
 [CamPostdocs](https://www.instagram.com/CamPostdocs)

 [Postdocs of Cambridge Society](https://www.linkedin.com/company/Postdocs of Cambridge Society)



Postdoc Centres

Unique spaces dedicated to postdocs



Professional Development

Helping you to develop for your current role and beyond

Creating and delivering resources and programmes to support the development of researchers beyond their current research project



Masterclasses
Workshops
Courses



Postdocs to Innovators Network
www.p2i-network.eu



Mentoring
Online resources

WE'RE HERE TO HELP
YOUR CAREER

POSTDOC
CAREERS
SERVICE



How can the Careers Service help me?



Our advice is confidential, tailored and impartial.

What kind of help suits you?



Do you want to focus on your individual needs?
Book an individual appointment



Do you enjoy learning through experience and with others?
Try one of our interactive live and online workshops through our series,
Career Essentials for PhDs and Postdocs



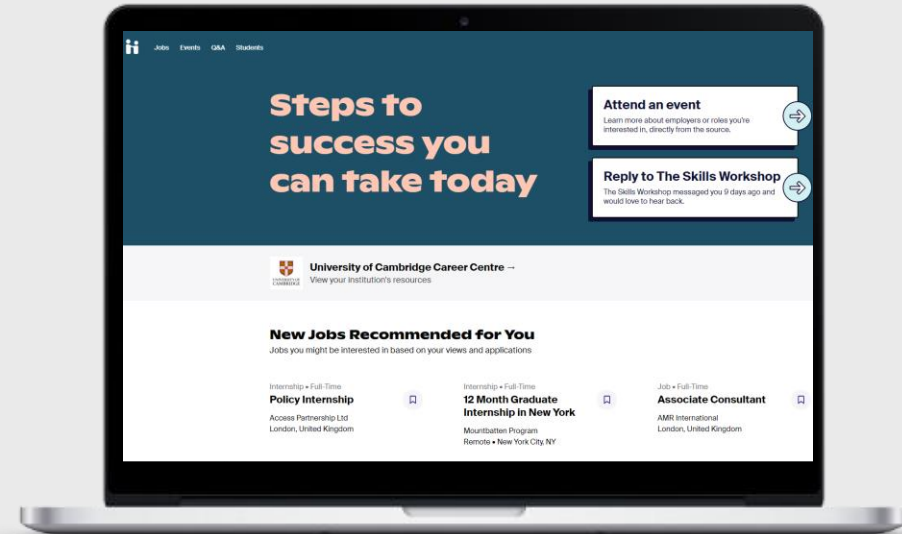
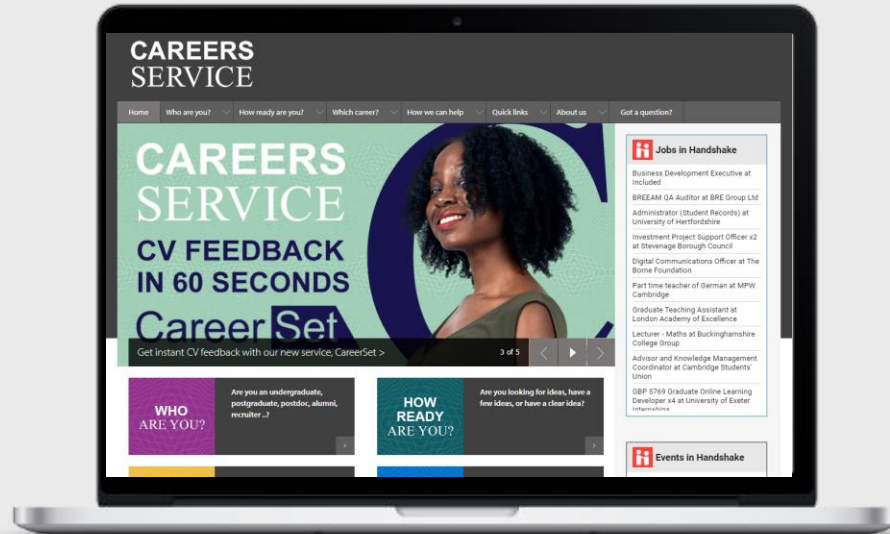
Do you like to hear from the experts?
Attend one of our live panel events or hear about it on our YouTube channel



Do you prefer to read about it?
Visit our website or access other resources through the Career Centre on Handshake, including our bespoke CV book

Website

www.careers.cam.ac.uk



Information



Interaction

Blog

<https://postdoccareers.edublogs.org/>



The first 3 ways to interact...



Register with the Careers Service on Handshake:

<https://www.careers.cam.ac.uk/careers-support-postdocs>

Click on the Registration Form



Explore our bespoke webpages for all aspects of careers planning for postdocs.



Book a space on a group learning Careers Essentials for Researchers workshop or a one-on-one appointment

Any questions? Email us at enquiries@careers.cam.ac.uk

Advocacy

Working with the community to solve issues



Understanding the lived experience of Cambridge postdocs, working with individuals and groups to understand and address needs

Representing postdoc voice is within the University, nationally and internationally.



Aiming to improve the landscape for current and future postdocs

Policy

Human Resources: www.hr.admin.cam.ac.uk

Dignity at Work Policy

Flexible working and family leave policies

Career progression and promotion

International Working Policy

Policies for Research Contracts:

www.research-operations.admin.cam.ac.uk/research-contracts/policies-research-contracts

Open Access



The Action Research on Research Culture Project



www.arrc.group.cam.ac.uk





The ARRC Project



~testing proposed solutions to issues in research culture~

Study 1 Hiring

Do Narrative CVs influence shortlisting decisions in academic recruitment?

Study 2 Development

How can we support the postdoc / PI relationship?

Study 3 Precarity

Is redeployment a useful way to mitigate the effects of short-term contracts?

Recruiting PIs who are hiring for postdoc positions at Cambridge.	Recruiting postdocs early 2024	Developing online survey on postdoc priorities when making career choices, for late 2024
More info and sign up: www.arrc.group.cam.ac.uk Email: arrcproject@admin.cam.ac.uk	<ul style="list-style-type: none">• Identity and expectations in the postdoc / ECR experience• Research culture celebration• Conversation with PDA	Pilot phase Spring 2024 www.arrc.group.cam.ac.uk

The ARRC Project



Three ways to get Involved:

- Sit on our postdoc advisory group – email kmd54@cam.ac.uk
- Sign up for our study on postdoc identity and expectations: *QR code above and fill in the form linked on the '[researcher development](#)' page.*
- Sign up to fill out our survey on how postdocs make career decisions (mid 2024): *QR code above and fill in the form linked on the '[precarity](#)' page.*

General Interest



CRASSH (Centre for Research in the Arts, Social Sciences and Humanities) seminar series on research culture.



researchculture_at_cambridge

Equality, Wellbeing, Networks & Benefits

Equality, Diversity and Inclusion

Occupational Health

Staff Counselling Centre

Local wellbeing initiatives

Diversity Networks

Networks local to specific departments

CAMbens

Career Support Scheme and Returning Carers Scheme

www.hr.admin.cam.ac.uk

Quick-Start guide

These are the best ways to get started and make the most of our services



1

Register to use a Postdoc Centre

2

Subscribe to the Postdoc Bulletin

3

Check the Postdoc Calendar

Postdoc Welcome

Networking

- Childcare Office
- Centre for Research in the Arts, Humanities and Social Sciences
- Equipment Sharing Database
- HR Transformation Programme
- Postdoc Academy
- Postdocs to Innovators
- Research Computing Service
- Research Integrity
- Researcher Development
- Staff Counselling Service
- Visas and Immigration