

# Postdoc Welcome Event

Vice-Chancellor's Welcome

Anthony Freeling

Postdoc Academy

Steve Joy

Postdocs Career Service

Diane Caldwell

Postdocs of Cambridge (PdOC)

Nino Läubli

Human Resources

Gina Warren



UNIVERSITY OF  
CAMBRIDGE



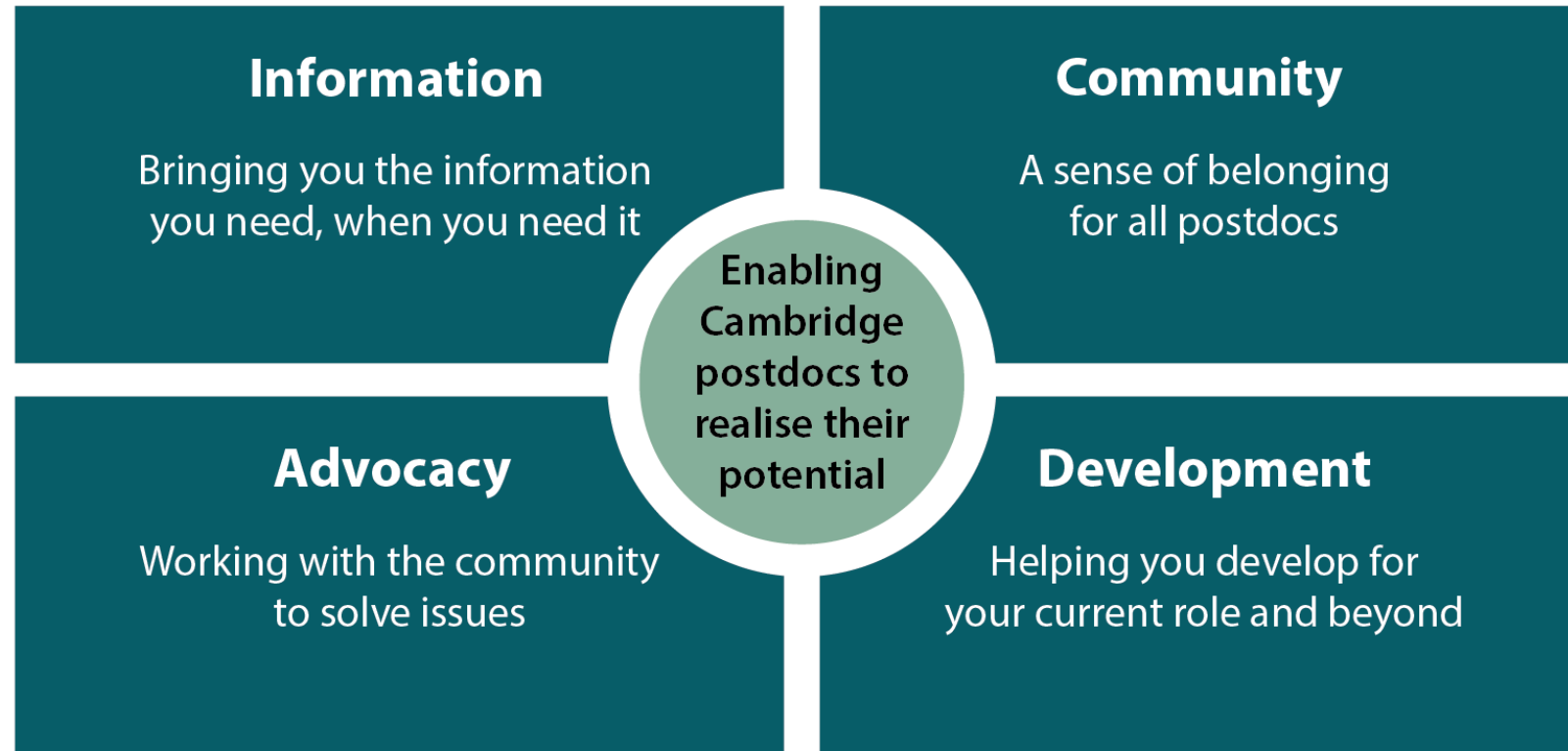
# **Postdoc Academy**

**Dr Steve Joy**

# What's special about Cambridge?

- Self-governing – at times bureaucratic, but highly democratic
- 31 interdependent, self-governing Colleges
- 150+ faculties and departments within six schools
- Non-school institutions (e.g. Libraries, Museums, Botanic Garden)
- Partner Institutes (e.g. Sanger, BAS, EBI)
- ~4,200 postdocs

# The Postdoc Academy



# Advocacy

*Working with the community to solve issues*



Understanding the lived experience of Cambridge postdocs, working with individuals and groups to understand and address needs

Representing postdoc voice is within the University, nationally and internationally.



Aiming to improve the landscape for current and future postdocs

# Professional Development

*Helping you to develop for your current role and beyond*

Creating and delivering resources and programmes to support the development of researchers beyond their current research project



Postdoc Masterclasses  
Workshops  
Online resources



Postdocs to Innovators Network  
[www.p2i-network.eu](http://www.p2i-network.eu)



Fellowships  
Mentoring programme

# Community

*A sense of belonging for all postdocs*



Offering hot-desking and event spaces at the Postdoc Centres

Providing various topical events and activities focusing on themes that relate to the community

Working with postdoc societies and groups supporting social activities and community endeavours





# Information

*Bringing postdocs the information they need when they need it*



Weekly newsletter



Postdoc Calendar



@Postdoc\_Academy



Information events

Events for postdocs

Professional opportunities

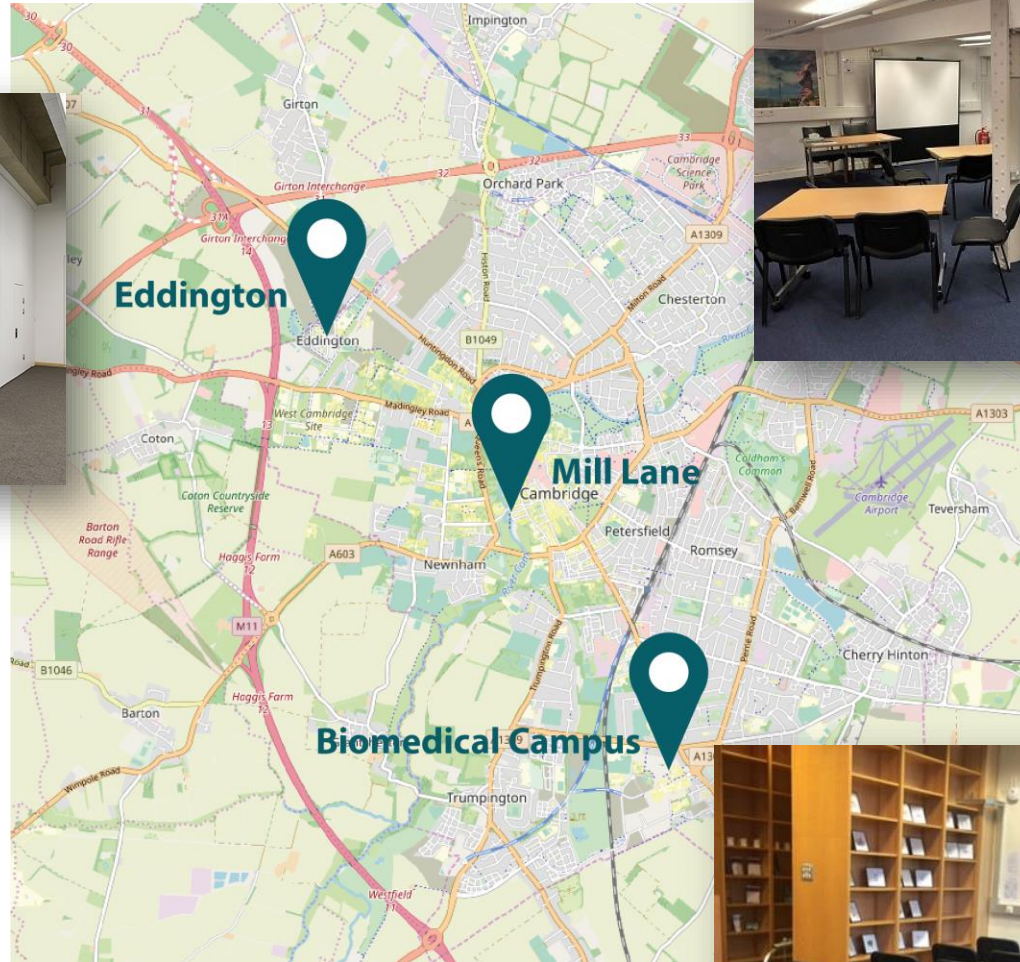
Social community activities

Support and initiatives

[www.postdocacademy.cam.ac.uk](http://www.postdocacademy.cam.ac.uk)

[contact.pda@admin.cam.ac.uk](mailto:contact.pda@admin.cam.ac.uk)

# Postdoc Centres



# Coming up

Workshops, courses and activities organised by the Postdoc Academy

## **Researcher Development:**

- Workshop: Managing Imposter Phenomenon – Tues 25 April
- Masterclass: Time & Focus – Wed 3 May

## **Information Events:**

- Pensions for Postdocs – Wed 26 April

# Quick-Start Guide



WE'RE HERE TO HELP  
**YOUR CAREER**

**POSTDOC**  
CAREERS  
SERVICE





# How can the Careers Service help me?





I wouldn't be where I am today without  
you guys!

Krishnaa, Postdoc at the Department of  
Surgery



## **We cover...**

Career options  
CVs and applications  
Fellowships  
Interviews

## **It's about you...**

We can help you  
whatever stage you are  
at.

Our advice is confidential,  
tailored and impartial.



# What kind of help suits you?

**Do you want to focus on your individual needs?**

Book an individual appointment

**Do you enjoy learning through experience and with others?**

Try one of our interactive live and on-demand workshops through our Career Essentials for PhDs and Postdocs series

**Do you like to hear from the experts?**

Attend one of our panel events (online Q&A sessions and podcasts available)

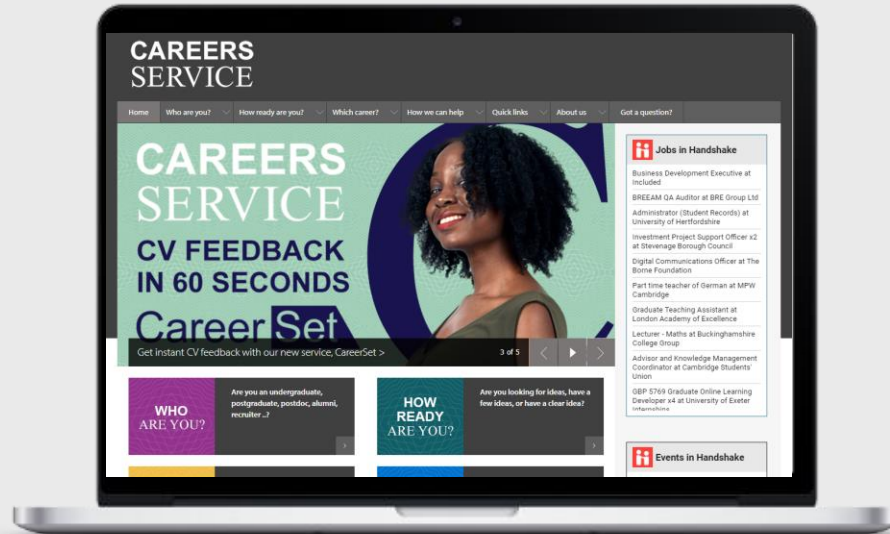
**Do you prefer to read about it?**

Visit our website or access other resources, including our CV book, through the Career Centre on Handshake

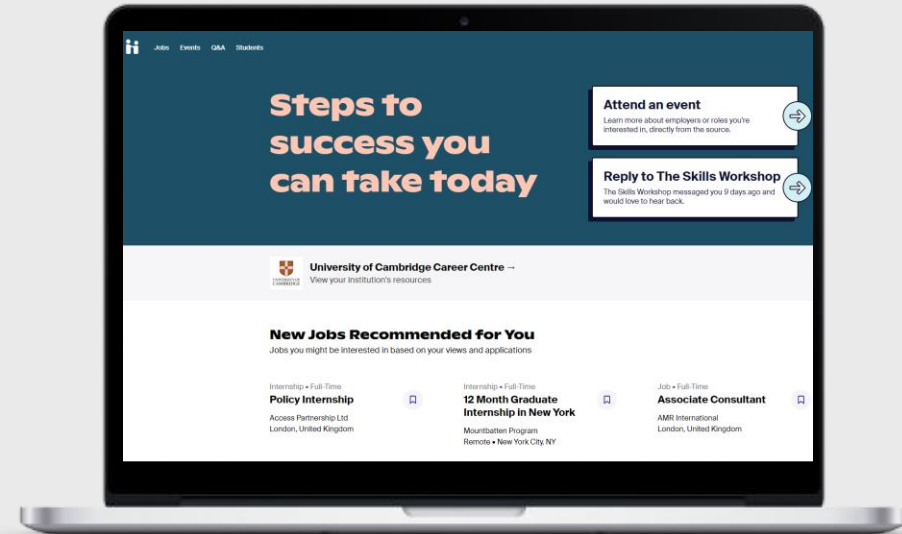


# Our website

www.careers.cam.ac.uk



Information



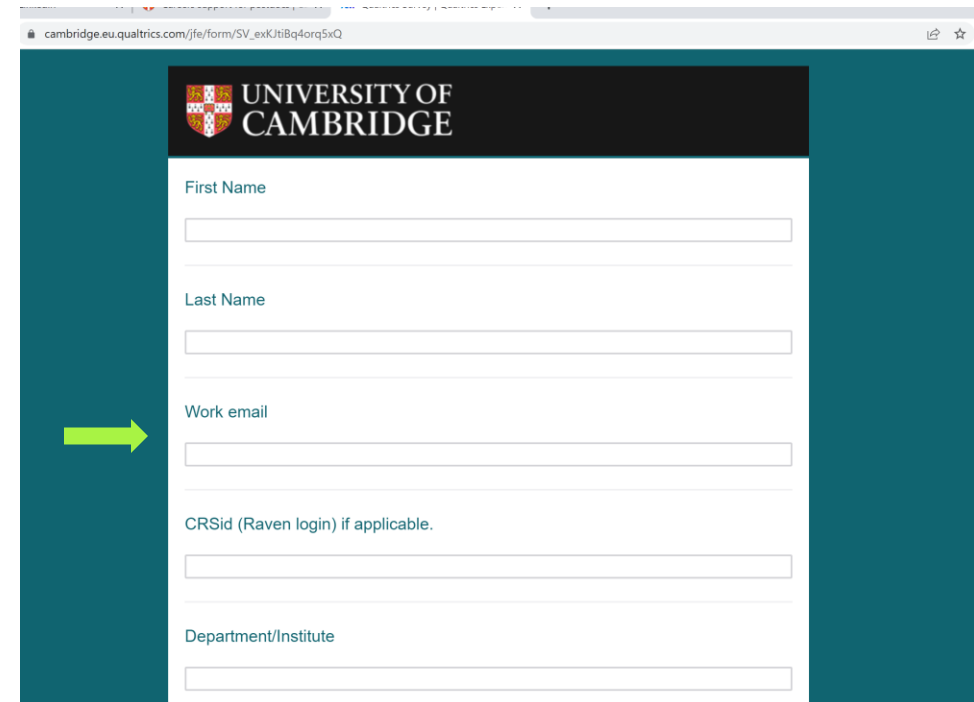
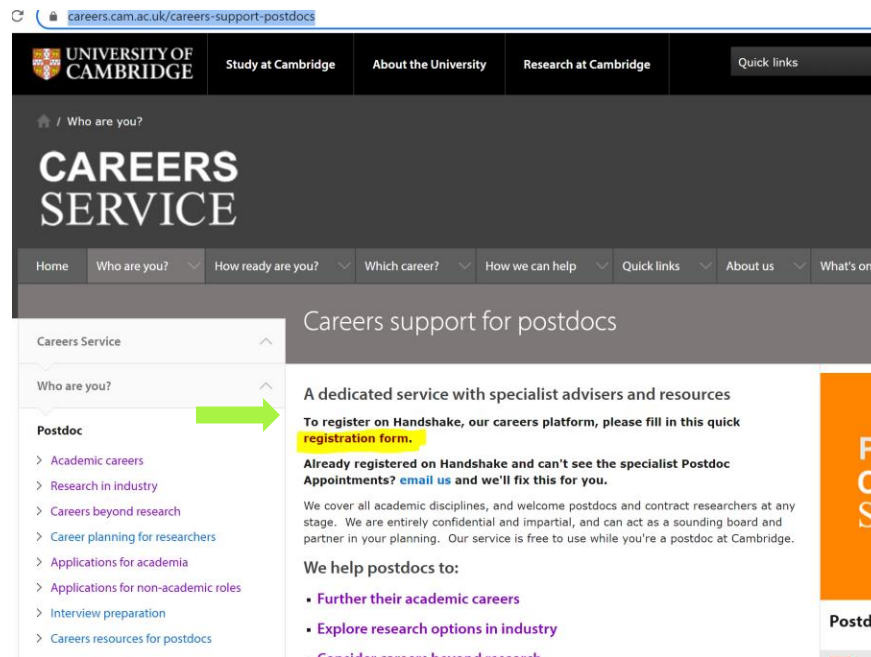
Interaction

# How to access the Careers Service

Go to our website:

<https://www.careers.cam.ac.uk/careers-support-postdocs>

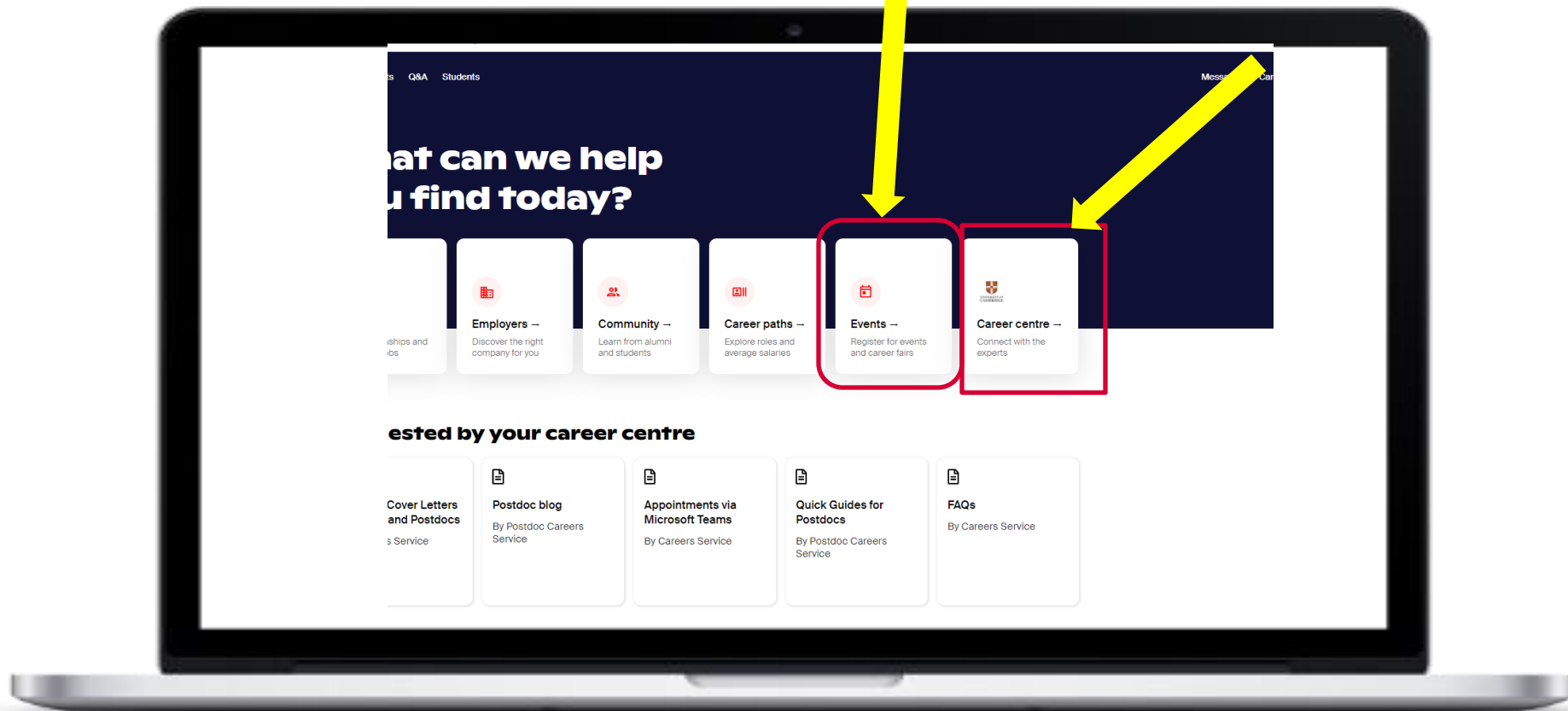
Click on the **registration form**

A screenshot of the registration form on the University of Cambridge Careers Service website. The form is titled 'UNIVERSITY OF CAMBRIDGE' and includes the following fields: 'First Name', 'Last Name', 'Work email', 'CRSid (Raven login) if applicable.', and 'Department/Institute'. A green arrow points from the left-hand screenshot to this form.

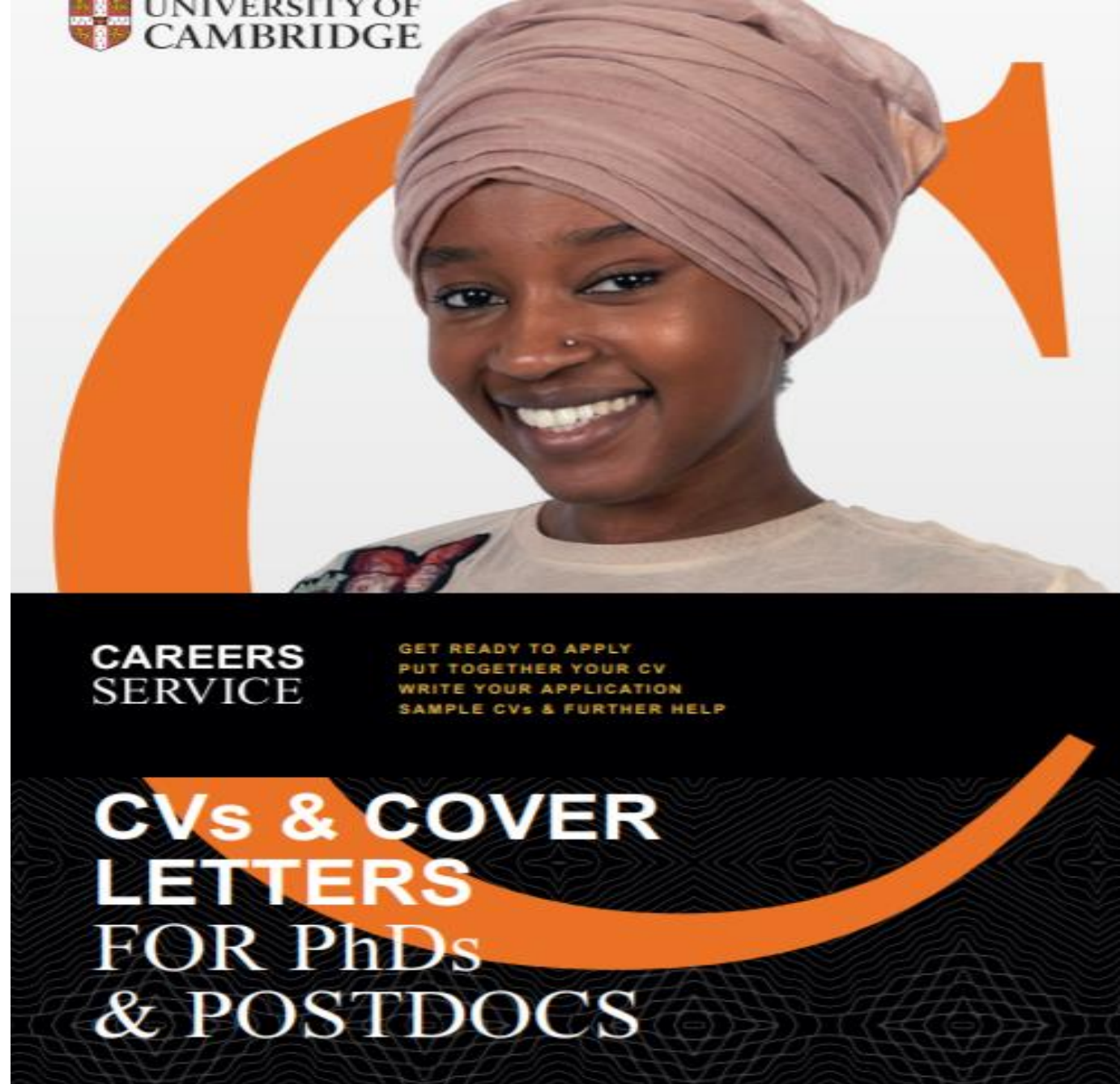
## Navigating Handshake

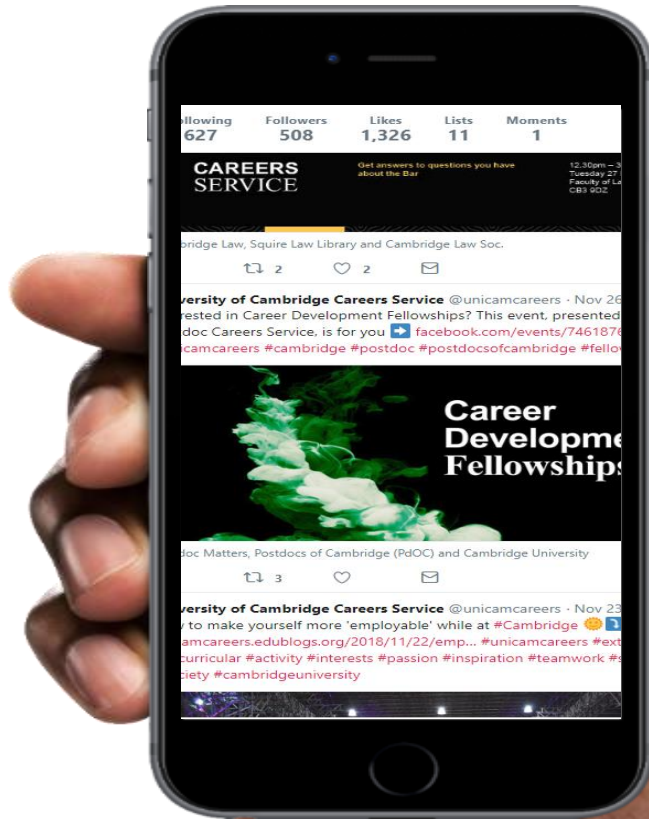
Events tailored to the  
postdocs community

Career Centre – access  
to appointments  
& resources



Download our  
flagship publication  
from Handshake  
resources





**Register today:**

**<https://www.careers.cam.ac.uk/careers-support-postdocs>**

→ registration form

**Web:**

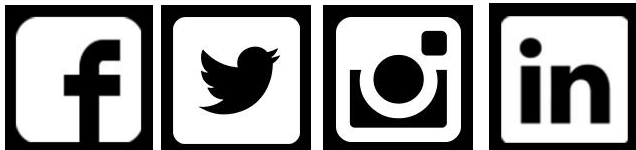
**[www.careers.cam.ac.uk/careers-support-postdocs](http://www.careers.cam.ac.uk/careers-support-postdocs)**

**Twitter**

**@unicamcareers**

**Blog**

**<https://postdoccareers.edublogs.org/>**





# The Postdoctoral Society of Cambridge

*for postdocs – by postdocs*





PdOC's aim is to

- represent postdocs
- support and create a social and intellectual network
- facilitate communication and provide information

Recognised as a Senior University  
Society and as a Research Staff  
Association (RSA).



[www.pdoc.cam.ac.uk](http://www.pdoc.cam.ac.uk)



[contact@pdoc.cam.ac.uk](mailto:contact@pdoc.cam.ac.uk)



# Aspects of PdOC



- Representing the University's very diverse postdoctoral community
  - Postdoctoral Matters Committee
  - Diversity and Equality
  - People Strategy for Postdocs
  - PdOC Department Network
- Providing advice and information
  - New starters guide + NVS
  - College affiliations
  - University policies



# What do PdOC do?

- Professional development
  - Seminars and postdoc talks
  - Annual research showcase
- Social events
  - Restaurant and pub nights
  - Bowling and sports events
  - Board games night etc.
  - **Garden Party @ Emma**  
**Tuesday, 20<sup>th</sup> June, 5 – 7 pm**





# Research Showcase & Garden Party

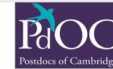
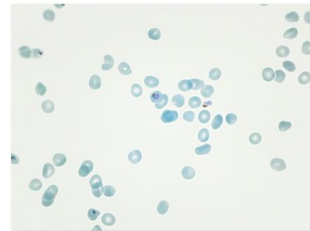
When Vortices Meet Shock Waves

Kshitij Sabnis



Making blood-based science more equitable with open-source hardware.

Samuel McDermott



Predictors of persisting symptomatology following SARS-CoV2 infection

Aimee Hanson (PhD)

Smith Lab (Department of Medicine)

Cambridge Institute of Therapeutic Immunology and Infectious Disease



Postdoc Research Showcase

12 November 2021



Identifying the economic networks of Ancient Egyptian tomb owners

Rune Olsen



# Get in touch, get involved!

Sign up!



Webpage: [www.pdoc.cam.ac.uk](http://www.pdoc.cam.ac.uk)

E-mail: [contact@pdoc.cam.ac.uk](mailto:contact@pdoc.cam.ac.uk)

 [Postdocs of Cambridge](https://www.facebook.com/Postdocs of Cambridge)

 [@CamPostdocs](https://twitter.com/CamPostdocs)



# Human Resources

## OVERVIEW



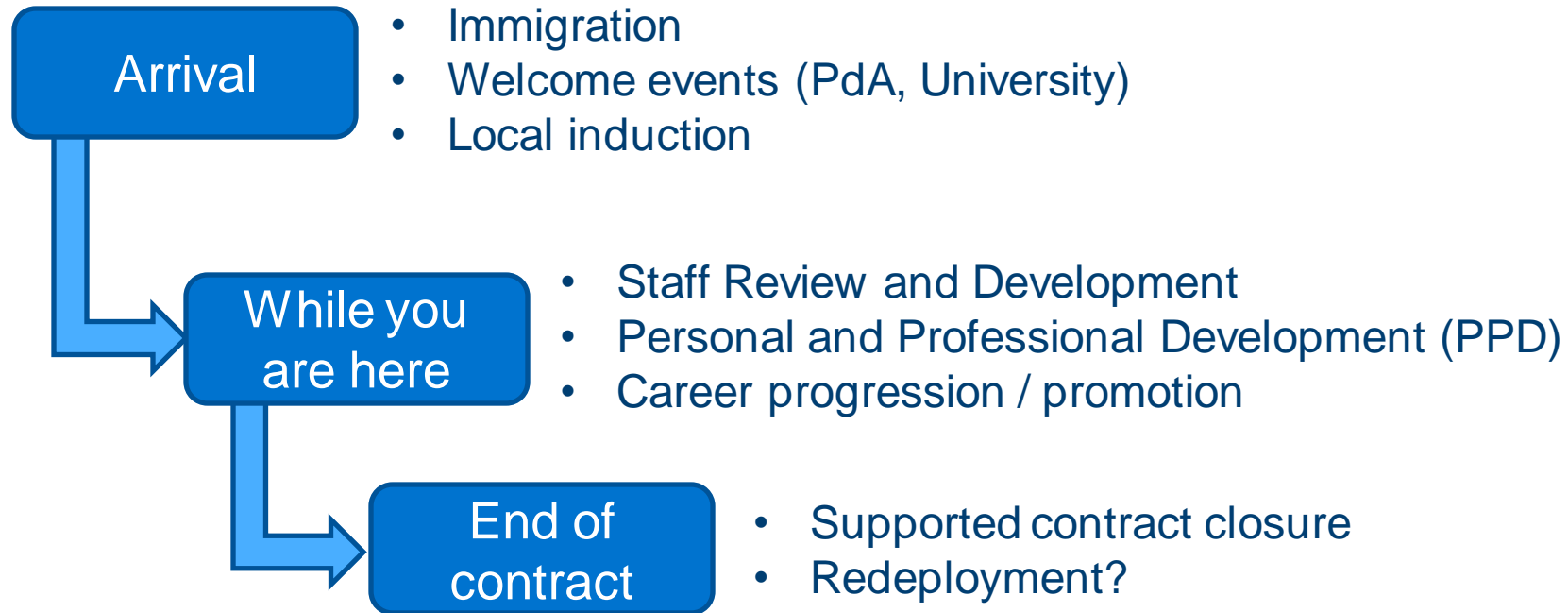
*Excellent research is conducted in environments with a supportive and inclusive research culture where staff can flourish*

## Environment and Culture

- Respect in the workplace
  - Equality, Diversity and Inclusion
  - Dignity at Work
  - Flexible/hybrid/family leave working policies
- Wellbeing in the workplace
  - Occupational Health
  - Staff Counselling Service
  - Networks and local wellbeing initiatives
- Additional benefits / programmes for staff
  - CAMbens
  - Contribution increment scheme
  - Carers Support Scheme

# *Research staff are recruited, employed and managed under conditions that recognise and value their vital contributions*

## **Employment**



For Guidance, please contact

Department / Institute Administrator, Local HR team or Central HR

# Any Questions/ Comments



# Questions



# University services attending today

## **University Sports Centre**

James Barclay - Sports Club Coordinator

Megan Harrington - Sports Marketing and Communications Assistant

## **Cambridge Enterprise**

Leila Guichard - Events Manager

## **Research Computing Services**

Adelais Mills - Digital Research Facilitator

Matthew Archer - Research Software Engineer

# Feedback form:

